

A Theory of the Low-Level Equilibrium Trap in Underdeveloped Economies



Richard R. Nelson

The American Economic Review, Vol. 46, No. 5. (Dec., 1956), pp. 894-908.

Stable URL:

<http://links.jstor.org/sici?sici=0002-8282%28195612%2946%3A5%3C894%3AATOTLE%3E2.0.CO%3B2-O>

The American Economic Review is currently published by American Economic Association.

Your use of the JSTOR archive indicates your acceptance of JSTOR's Terms and Conditions of Use, available at <http://www.jstor.org/about/terms.html>. JSTOR's Terms and Conditions of Use provides, in part, that unless you have obtained prior permission, you may not download an entire issue of a journal or multiple copies of articles, and you may use content in the JSTOR archive only for your personal, non-commercial use.

Please contact the publisher regarding any further use of this work. Publisher contact information may be obtained at <http://www.jstor.org/journals/aea.html>.

Each copy of any part of a JSTOR transmission must contain the same copyright notice that appears on the screen or printed page of such transmission.

JSTOR is an independent not-for-profit organization dedicated to creating and preserving a digital archive of scholarly journals. For more information regarding JSTOR, please contact support@jstor.org.

A THEORY OF THE LOW-LEVEL EQUILIBRIUM TRAP IN UNDERDEVELOPED ECONOMIES

By RICHARD R. NELSON*

The malady of many underdeveloped economies can be diagnosed as a stable equilibrium level of per capita income at or close to subsistence requirements. Only a small percentage, if any, of the economy's income is directed toward net investment. If the capital stock is accumulating, population is rising at a rate equally fast; thus the amount of capital equipment per worker is not increasing. If economic growth is defined as rising per capita income, these economies are not growing. They are caught in a low-level equilibrium trap. The purpose of this paper is to present a theory of the nature of the low-level equilibrium trap. The model is offered as a framework within which to analyze the problems of stagnant economies rather than as a model the parameters of which are to be statistically estimated. It is far too blunt an instrument for statistically refined methods of testing.¹

Although the concept of low-level stagnation is scarcely new and different it is hoped that this paper does more than express the common knowledge of economists in a complicated manner. To the extent that the assumptions are realistic, the model provides a tool for analysis of the effects of various policies; and certain pitfalls that are not intuitively obvious are brought to light. The model shows that, even if production techniques are not improved and even in the absence of a crash investment program, the trap may still be escaped if the socio-political environment is favorable.

I. Assumptions and Definitions

Three equations comprise the model: (1) an equation explaining changes in income, (2) an equation explaining the quantity of net capital formation, and (3) an equation explaining population growth. The

*This paper is a summary of the theoretical sections of a thesis submitted in candidacy for a Ph.D. in economics at Yale University, 1956. The work was written under the direction of Professors Henry Bruton, William Fellner and James Tobin. The author is assistant professor of economics at Oberlin College.

¹ While this paper was being written Harvey Leibenstein's book, "A Theory of Economic Demographic Development," was published. His model and the present one are similar in many respects.

equations imply assumptions about technology and about human behavior.

A. *Changes in Income*

Income is the net aggregate supply of want-satisfying goods distributed in a period of time and is a scalar quantity measured in deflated money units. Given the social-political environment and existing technology, income is assumed to be a linear homogeneous function of two variables, capital and labor. If both capital and labor are increased n -fold, and if there is no change in techniques, income produced increases n -fold.

$$(1) \quad Y = Af(K, P); \quad nY = Af(nK, nP)$$

(Y = income, K = capital stock, P = population, A = an index of productivity, a constant if technology is constant.) Inputs of factors not explicitly included in equation (1) are assumed proportional to the input of either capital or population and therefore may be omitted from the function.

Capital, like income, is a scalar quantity valued in deflated money units. Population is a number. In the specific production function used in the appendix ($Y = AK^\alpha P^{1-\alpha}$) population is multiplied by capital and so the equation is dimensionally consistent.

The Population Input. The labor input is assumed to be a constant percentage of the population, given the social-political environment. The omission of the constant multiplier in equation (1) does not affect the analysis, and permits simpler notation.

The Capital Input. Capital consists of produced goods and arable land used in the production process. Land and produced capital are perfectly substitutable in the production of aggregate income. In other words, n money units of land, and n money units of produced capital can produce either the same product, or different products valued equally.

The Social and Technological Environment. The assumption of linear homogeneity is reasonable only if the social structure and the technology used are constant. Cultural inertia is conducive to economic inertia. But the reverse is also true. Where economies are stagnant, where capital is not accumulating, cultural rigidity is encouraged by a rigid economic circular flow.

Improved use of existing resources, either by fuller utilization of available inputs or by use of better alternative techniques, enables greater income from given inputs. Economies caught in the low-level equilibrium trap are often marked by considerable slack; that is, existing inputs are not producing the maximum amount of output that man's

knowledge will allow. If these economies are properly stimulated, income may be increased with no increase in factor supplies. Increase in the productivity of existing factor supplies may be defined as innovation and is represented in the model by an increase in A in equation (1).

B. Net Capital Formation

Net capital formation is an increase in the quantity of the capital input of the production function. In the model there are two sources of capital formation: capital may be created out of current income at the alternative cost of consumption, and, if there is unused arable land, capital may be increased by bringing this land under cultivation. Land and savings are valued in deflated money units.

$$(2) \quad dK = dK' + dL$$

(K = capital, K' = savings-created capital, L = land under cultivation.)

Land. The rate at which additional deflated money units of land are brought under cultivation is positively related to the increase in population, negatively related to the proportion of total arable land already under cultivation.

$$(3) \quad dL = g\left(\frac{L^* - L}{L^*}\right)dP$$

(L = land under cultivation, L^* = total arable land, P = population.) As land area under cultivation increases, the difficulty of bringing into cultivation additional land units of equal productivity increases.

Reproducible Capital. Per capita savings are determined by per capita income, and all savings flow into investment. Keynesian unemployment of labor and capital is a phenomenon of a money-market economy of specialized producers. The theory is not appropriate to an economy based on self-sufficient units, with money and the market playing but a minor role. Foreign investment is autonomous. The per capita rate of investment from savings, then, is determined as follows:

$$(4a) \quad \frac{dK'}{P} = \begin{matrix} b(Y/P - X); & Y/P > (Y/P)' \\ -C & ; & Y/P \leq (Y/P)' \end{matrix}$$

or

$$(4b) \quad \frac{dK'}{Y} = \begin{matrix} b - bX \cdot (P/Y); & Y/P > (Y/P)' \\ -C(P/Y) & ; & Y/P \leq (Y/P)' \end{matrix}$$

(K' = investment from savings, X = the zero savings level of Y/P , $(Y/P)'$ = the level of per capita income below which the rate of net disinvestment is the maximum technically possible.)

Until a certain level of per capita income is reached, all income will be spent on the necessities of life; hence the positive X -intercept (see Figure 1). Negative investment is limited by the rate of depreciation of the capital stock and the incentive to tear down existing equipment; hence the break in the function at $(Y/P)'$. One cannot eat torn-up railroad track no matter how hungry one may be. There is a maximum rate of capital depletion. (Soil depletion through failure to apply fertilizer is a principal source of capital depletion in poor agricultural economies.)

Changes in the distribution of income shift the dK'/P function to the right along the Y/P axis if the change is toward greater equality.

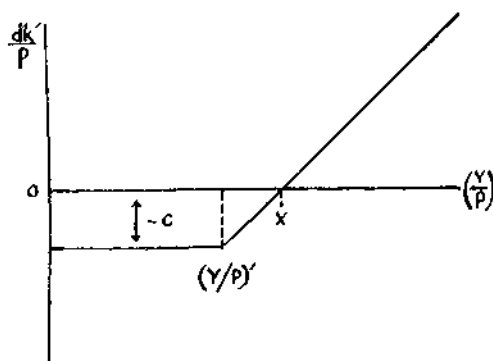


FIGURE 1

The more unequal the income distribution, the lower the level of per capita income that is sufficient to support a given level of positive savings. Government policy may force capital formation from an economy with a per capita income so low that no investment would be forthcoming in the absence of government policy. Changes in government policy, distribution of income, and the social incentive system shift the dK'/P curve along the Y/P axis.

C. Population Growth

Expressed as a formula, the rate of population growth is simply the birth rate minus the death rate plus the rate of net immigration. For the purposes of the present model immigration is autonomous.

The neo-Malthusian assumptions about population growth are made. In areas with low per capita incomes short-run changes in the rate of population growth are caused by changes in the death rate, and changes in the death rate are caused by changes in the level of per capita income. Yet once per capita income reaches a level well above subsistence requirements, further increases in per capita income have a negligible

effect on the death rate. Since this is a short-run model, effects on the birth rate of a high, sustained per capita income are ignored. Hence:

$$(5) \quad \frac{dP}{P} = \begin{cases} p(Y/P - S); & Y/P < (Y/P)'' \\ (dP/P)^* & ; \quad Y/P \geq (Y/P)'' \end{cases}$$

(S = subsistence level of per capita income, $(dP/P)^*$ = maximum rate of population growth, $(Y/P)''$ = level of per capita income above which increases in per capita income have negligible effect on the death rate.) The sharp break in the function is artificial but simplifies exposition (see Figure 2).

This function assumes a given income distribution, a given social structure, and given medical techniques. A shift in income distribution toward greater equality shifts the dP/P function to the left along the

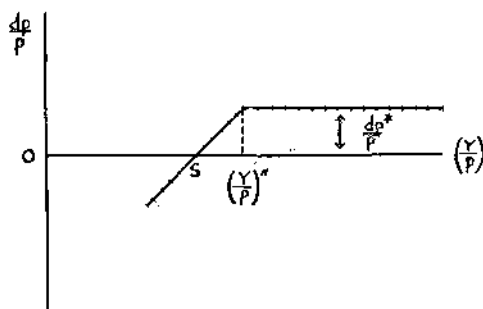


FIGURE 2

Y/P axis. The more unequal the income distribution, the smaller the population a given aggregate income can support.

The introduction of modern medical practices in certain areas since the second world war has enabled a sharp cut in the death rate; yet nutrition and housing standards have fallen sharply in some of these areas. If the death rate is viewed as a function of per capita income, then improved medical technique should be viewed as shifting the function to the left.

These assumptions are the basis of the trap model. Clearly, the model is designed to examine the short run. Any substantial sustained change in per capita income certainly generates social change, and as the social-political structure changes the functions shift.

II. The Low-Level Equilibrium Trap

The assumptions imply certain shapes of the dY/Y and dP/P curves plotted against the Y/P axis. Given the state of technology, the quan-

tity of unused land, and the social-political environment, dY/Y and dP/P are uniquely determined by the level of per capita income.

The rate of growth of income, dY/Y , is explained by the equation:

$$(6) \quad \frac{dY}{Y} = \frac{\partial Y}{\partial K} \cdot \frac{dK}{Y} + \frac{\partial Y}{\partial P} \cdot \frac{dP}{Y}$$

$$= \frac{\partial Y}{\partial K} (dK'/Y + dL/P \cdot P/Y) + \frac{\partial Y}{\partial P} \cdot \frac{dP}{P} \cdot \frac{P}{Y}$$

Since dK'/Y , dL/P and dP/P are determined by the level of per capita income through equations (3), (4) and (5), if $\partial Y/\partial K$ and $\partial Y/\partial P$ are determined by Y/P , then dY/Y is certainly determined by Y/P . If the production function is linear homogeneous, per capita income (Y/P) is uniquely determined by the capital-labor ratio (K/P), and the marginal productivities of capital and labor ($\partial Y/\partial K$, $\partial Y/\partial P$) are determined by the ratio of capital to labor (K/P). Thus, both the dY/Y and the dP/P curves are fixed over the Y/P axis.

If the level of per capita income that generates a zero rate of capital growth is also the subsistence level of income (if $S = X$), then dY/Y and dP/P both equal zero at the subsistence level of per capita income (see Figure 3a). If the zero-investment level of per capita income exceeds the subsistence level of per capita income (if X exceeds S), then dY/Y is negative at S , and equals zero some point to the right of S and to the left of X (see Figure 3b). At this point the increase in income caused by a rising labor force is just offset by the decrease in income caused by a declining capital stock. If X is less than S , then the zero dY/Y level of per capita income is to the left of S and to the right of X .

To the right of its zero value the dY/Y curve rises with increasing per capita income as dP/P , the rate of population growth, and dK'/Y , savings as a fraction of income, increase. As per capita income further increases, dP/P becomes a constant, and savings as a percentage of income approaches a constant; hence the dY/Y curve flattens out.

As per capita income rises still higher, the dY/Y curve may turn down. If the production function is linear homogeneous, the greater per capita income, Y/P , the smaller must be the output-capital ratio, Y/K , and since dK/Y approaches a constant, the proportional rate of growth of capital, $dK/K = (Y/K) \cdot (dK/Y)$, will tend to fall as per capita income increases. Since dP/P is a constant, dY/Y will tend to fall.²

If the rate of growth of income exceeds the rate of growth of popula-

² $dk/Y = dK'/Y + dL/P \cdot P/Y$. Since both dK'/Y and dL/P approach a constant as Y/P increases, if dL is large relative to dK' , dK/Y may fall as Y/P gets large.

tion (if the dY/Y curve lies above the dP/P curve at a given level of Y/P) then per capita income will increase from that level. Conversely, if the dP/P curve lies above the dY/Y curve at a given level of Y/P , then per capita income will fall from that level. Levels of per capita income at which dY/Y equals dP/P are equilibrium levels of per capita income. Population and income grow at an equal rate (positive, negative or zero) at that level of per capita income. However, an intersection of the dY/Y and dP/P curves will only be a stable equilibrium level of per capita income if the slope of the population growth curve exceeds the slope of the income growth curve at the intersection. If the dP/P curve lies above the dY/Y curve to the right of the intersection, below it to the left of the intersection ($Y/P = S$ and $Y/P = (Y/P)^*$)

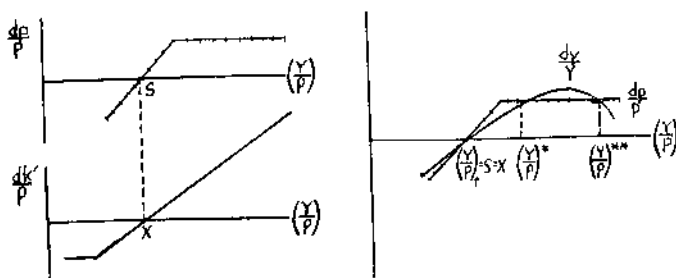


FIGURE 3a

in Figure 3a), then if per capita income increases above the equilibrium level the increase in population will exceed that of income and per capita income will fall back toward the equilibrium. If per capita income falls below the equilibrium value, the rate of population growth will drop below the rate of income growth and per capita income will climb back toward the equilibrium. Conversely, if the slope of the dY/Y curve exceeds the slope of the dP/P curve at an equilibrium level of Y/P , the equilibrium is unstable ($Y/P = (Y/P)^*$ in Figure 3a), and deviations from that level will tend to grow. This is not economics but simple mathematics.

The low-level equilibrium trap is a phenomenon caused by the shape of the dY/Y and dP/P curves at their point of intersection at or in the neighborhood of S , the subsistence level of per capita income. This low-level equilibrium will henceforth be symbolized as $(Y/P)_t$ (where t means trap). Economies whose social, political and economic organization generate a dP/P curve that exceeds in slope the dY/Y curve at $(Y/P)_t$ are caught in a low-level equilibrium trap—the equilibrium is stable. But there is no reason why the intersection $(Y/P)_t$ need be or remain a stable equilibrium. If the social, political and economic conditions generate a dY/Y curve of greater slope than the dP/P curve

at $(Y/P)t$, then there is no tendency for an economy to stagnate at the low-level equilibrium.

Translating from mathematics to economics, what conditions lead to a low-level equilibrium trap? If the production function is linear homogeneous, then output per capita can only be increased if the amount of capital per worker is increased. In other words, the dY/Y curve lies above the dP/P curve at a given level of per capita income if and only if the rate of capital increase exceeds the rate of population increase at that level of per capita income.

At an equilibrium level of per capita income both capital and population are constant, or are changing at an equal rate so that their ratio is constant. If the ratio $\frac{d(dP/P)}{d(dK/K)}$ at the equilibrium $(Y/P)t$ is less than one, the equilibrium is unstable and there is no trap. If the ratio is greater than one, the economy is trapped at $(Y/P)t$. If $S = X$ and $dK/K = dP/P = 0$ at $(Y/P)t$, then the ratio can be written:

$$(7) \quad \frac{K}{P} \cdot \frac{d^2P}{d^2K} = \frac{K}{P} \cdot \frac{\dot{p}}{b + g[(L^* - L)/L^*]p}$$

where \dot{p} , from equation (5), shows how responsive the rate of population growth is to changes in per capita income; b , from equation (4), is the marginal propensity to invest in per capita terms; $(L^* - L)/L^*$, from equation (3), is the percentage of total arable land that is still free and available for increased agricultural production, and g , from equation (3), is a measure of the propensity of new population to clear new arable land. The first fraction (K/P) summarizes the technological efficiency of the economy. The lower the ratio, the smaller the quantity of capital per laborer needed to support a given level of labor productivity. The second fraction:

$$\frac{\dot{p}}{b + g[(L^* - L)/L^*]p}$$

summarizes an economy's response to increases in per capita income from $(Y/P)t$. The lower the ratio, the greater the induced increase in capital relative to the induced increase in population. The greater the marginal propensity to invest, and the easier it is to bring new land into cultivation, the lower will be the ratio.

Thus, the social and technological conditions conducive to trapping an economy are: (1) a high correlation between the level of per capita income and the rate of population growth, (2) a low propensity to direct additional per capita income to increasing per capita investment, (3) scarcity of uncultivated arable land, and (4) inefficient production

methods. Opposite conditions are conducive to an unstable equilibrium at $(Y/P)t$. If the population maintains control over its rate of growth, if the propensity to invest is high and free land plentiful, and if production methods are efficient, then the economy will not be caught in the low-level equilibrium trap.

The Strength of the Trap. Assuming for the moment that the dY/Y and dP/P curves are shaped so as to trap the economy at $(Y/P)t$, the trap may be tight or loose. The strength of the trap is defined as the gap between $(Y/P)t$ and $(Y/P)^*$, the value of per capita income that must be achieved before the pull of the trap is escaped (Figure 3a). The relative values of S , the subsistence level of income, and X , the zero investment level of income, are important factors in determining the strength of the trap. If S is less than X , then the dP/P curve cuts

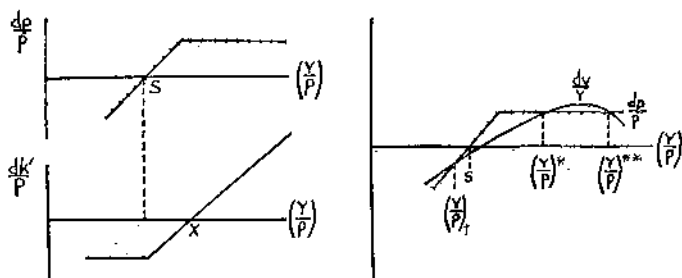


FIGURE 3b

the Y/P axis to the left of the point where the dY/Y curve cuts the axis. In this case the gap between $(Y/P)t$ and $(Y/P)^*$ is, of course, increased (Figure 3b). If X moves to the left, S to the right as income inequality increases, then, *ceteris paribus*, the more unequal the distribution of income, the weaker the hold of the trap.³

Improvement in medical technique and knowledge reduces the level of per capita income that is consistent with a stable population, and, according to the model, would seem to make escape from the trap more difficult. However, this effect may well be compensated for by the increase in labor productivity (shifting and lifting the dY/Y function) that better health may permit. This example points out an important implicit assumption of the model (and of many models): that parameter values are assumed independent of each other.

Ceteris paribus, the smaller the difference between the slopes of the dP/P and dY/Y functions at $(Y/P)t$, the weaker the hold of the trap.

³ The model neglects the stimulus that a mass market and the type of social structure that comes with greater equality of income distribution might have upon the propensity to invest and innovate.

The factors that act to trap an economy determine, in their degree, the tightness of the trap and the difficulty of escape.

The model suggests the tentative hypothesis that until the technological advances of the eighteenth and nineteenth centuries, rapid continuous growth, such as that of the United States, Western Europe and Japan, could never have taken place, and only economies with ample free land (or that were exploiting colonies or subject states) could for long support a level of per capita income greater than $(Y/P)t$. (This is not to say that a small privileged class could not live in wealth.) Only economies with free land faced a dY/Y curve of greater slope than the dP/P curve at $(Y/P)t$. The state of technological knowledge necessitated a far larger amount of capital per laborer to support a given level of labor productivity than is needed with modern knowledge. The ratio $\frac{K}{P} \cdot \frac{d^2P}{d^2K}$ was large because K/P at $(Y/P)t$ was large.

If free land (a large $\frac{L^* - L}{L^*}$) permitted easy capital accumulation, a level of per capita income in excess of subsistence needs could be supported by productive agriculture, but as population increased and crowded the land, $\frac{L^* - L}{L^*}$ would decrease and the dY/Y function would pivot clockwise about S and $(Y/P)t$ would become a stable equilibrium (see Figure 4). Once the land became crowded all econo-

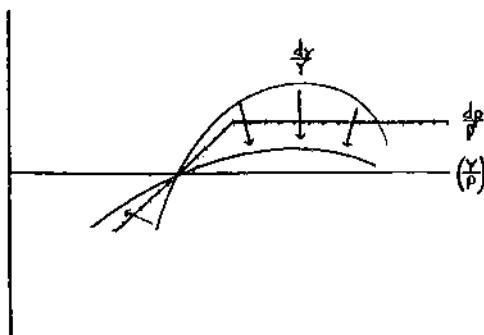


FIGURE 4

mies were trapped. It has only been since the industrial revolution that man's knowledge has permitted densely populated economies to remain prosperous.

The Escape from the Trap. The low-level equilibrium may be escaped in several different ways. Historically, escape has been achieved through the simultaneous use of several means.

Changing social structure (a greater emphasis upon thrift and entrepreneurship, greater incentives to produce in quantity, increased incentive to limit family size), increased percentage of the population in the labor force, changing distribution of income enabling accumulation of wealth by investors, a government investment program, all act to shift and pivot the income growth and population growth functions and thereby weaken the strength of the trap; perhaps eliminate the trap by pivoting the dY/Y curve to a greater slope than the dP/P curve at $(Y/P)t$. If this model summarizes the maladies of stagnant economies, then it is clear that policies directed toward eliminating social inertia may play an important role in loosening the trap.

Social and political change has usually been accompanied by application of improved production techniques. The raising of the marginal productivity of capital and labor pivots the dY/Y function counter-clockwise. If the improvement in techniques is applied to all production, as well as to new production, then the taking up of slack lifts the dY/Y function over its entire range and enables an income increase that is achieved without increasing factor supplies. If the production function is written $Y = A_f(K, P)$, then dA/A , the proportional increase in productivity of existing factors of production, may be called the rate of innovation. The taking up of slack through innovation may provide the boost necessary to lift an economy out of the low-level equilibrium trap.

Increases in income and capital achieved through funds obtained from abroad, and decreases in population through emigration can help to free an economy from the low-level equilibrium trap. However, small injections of funds may have no permanent effect unless accompanied by changing social-economic parameters, for unless the injection is sufficient to make dY/Y exceed dP/P the income increase will tend to be swamped by population increase. Of course, foreign assistance, together with internal change, can play an important role in boosting an economy from the hold of the trap.

Growth after $(Y/P)^$ is achieved.* Once per capita income has increased beyond $(Y/P)^*$ growth will be self-generative, since $(Y/P)^*$ is an unstable equilibrium. Per capita income will either rise to a stable equilibrium value $(Y/P)^{**}$ if the dY/Y curve turns down to cut the dP/P curve from above; or, if the dY/Y curve stays above the dP/P curve (it need not turn down), per capita income will continuously increase. The gap between the dY/Y and dP/P curves determines the rate of growth of per capita income.

Thus, growth can be rapid and explosive if the dY/Y curve stays above the dP/P curve, or growth may be of the slow, shifting-equilibrium type. Through time, technological innovation may shift the

dY/Y function, and a decline in the birth rate may drop the dP/P function, thus shifting $(Y/P)^{**}$ to the right and accelerating growth. However, the model can only be, at best, suggestive of the determinants of the rate of growth of economies with a high per capita income.⁴

The Effect of Differential Rates of Response. The model is based on the assumption of a rapid response of population and net capital formation to changes in the level of per capita income. Differential rates of response can affect the nature of the low-level equilibrium trap. If, after an increase in per capita income, savings out of increased incomes are quickly directed toward capital creation which quickly starts new production, while population growth occurs only after a substantial time-lag, then the trap model is meaningless as a description of the world, and the model clearly does not explain stagnation. However, if the dP/P response occurs at the same speed, or with greater speed than the dY/Y response, then the different rates of response do not weaken the trap. The response of the death rate to increases in per capita income is probably rapid in areas where the level of per capita income is very low, and where death rates are high because of the low per capita income. On the other hand, income not consumed becomes productive only with a time-lag. Investment projects must be completed before income is created out of past increases in income. Differential rates of response are probably not of the sort that eliminate the low-level equilibrium trap.

⁴The assumptions of the model become increasingly unrealistic as per capita income increases above the subsistence level. The population growth function and the investment function clearly do not summarize the principal determinants of population growth and growth of capital stock in economies with a high per capita income. We then move into the Keynesian world, and Say's law is a poor tool. The assumption of a constant birth rate and a death rate responsive to small changes in per capita income likewise is inapplicable in economies outside the trap range. Further, economies with a high level of per capita income are socially and technologically dynamic. Where population is growing and capital stock increasing, the social interrelationships and power equilibria are constantly changing. Economic change and cultural inertia are incompatible. If there is frequent social and technological change, the functions of the model are constantly shifting and the model becomes useless for analytic purposes. The assumption of a stable social-political system is also inappropriate to an economy with a per capita income below the subsistence level. Social and political upheaval has always been a concomitant of starvation. Hence, the mathematical curves of the model only have economic relevance in the neighborhood of the subsistence level of per capita income.

APPENDIX

The basic equations of the model are:

$$(1) \quad Y = Af(K, P), \quad nY = Af(nK, nP)$$

(Y = income, K = capital stock, P = population, A = index of productivity)

$$(2) \quad dK = dL + dK'$$

L = land under cultivation, K' = capital from savings)

$$(3a) \quad \begin{aligned} dK'/P &= b(Y/P - X); & Y/P > (Y/P)' \\ &- C & Y/P \leq (Y/P)' \end{aligned}$$

(X = zero savings level of per capita income)

$$(3b) \quad \begin{aligned} dK'/Y &= b - bX(P/Y); & Y/P > (Y/P)' \\ &- C(P/Y); & Y/P \leq (Y/P)' \end{aligned}$$

$$(4) \quad dL = g[(L^* - L)/L^*]dP$$

(L^* = total amount of arable land)

$$(5) \quad \begin{aligned} dP/P &= p(Y/P - S); & Y/P < (Y/P)'' \\ &(dP/P)^* & Y/P \geq (Y/P)'' \end{aligned}$$

(S = subsistence level of per capita income)

Differentiating (1) and using (2):

$$(6a) \quad dY/Y = f_k(dK'/Y + dL/Y) + f_p(dP/Y) + dA/A$$

$$(6b) \quad dY/Y = f_k(dK'/Y + dL/P \cdot P/Y) + f_p(dP/P + P/Y) + dA/A$$

In order to give the model a firm shape that can be drawn, the Cobb-Douglas production function is used. However the essential argument holds for any linear homogeneous function.

$$(7) \quad Y = AK^aP^{1-a}$$

$$(8) \quad \begin{aligned} dY/Y &= dA/A + aA(K/P)^{a-1} \cdot (dK'/Y + dL/Y) \\ &+ (1-a)A(K/P)^a \cdot dP/Y \quad [\text{from (7) and (6a)}] \end{aligned}$$

The following equations are useful for putting (8) in a more convenient form:

$$(9) \quad Y/P = A(K/P)^a$$

$$(10) \quad K/P = A^{-1/a}(Y/P)^{1/a}$$

$$(11) \quad Y/K = A(K/P)^{a-1} = A^{1/a}(Y/P)^{(a-1)/a}$$

(8) may be rewritten:

$$(12) \quad \begin{aligned} dY/Y &= dA/A + aA^{1/a}(Y/P)^{(a-1)/a}(dK'/Y + dL/P \cdot P/Y) \\ &+ (1-a)dP/P; \quad [\text{from (10)}] \end{aligned}$$

or as:

$$(13) \quad \begin{aligned} dY/Y &= dA/A + adK/K + (1-a)dP/P, \\ dY/Y &= dA/A + [aA^{1/a}(Y/P)^{(a-1)/a}][b - bX(P/Y) \\ &+ (P/Y)g((L^* - L)/L^*)p(Y/P - S)] \end{aligned}$$

$$(14a) \quad + (1-a)p(Y/P-S); \text{ [from (10), (3b), (4) and (5)]} \\ [(Y/P)' < Y/P < (Y/P)'']$$

I assume that both S and X fall within this range of Y/P .

$$(14b) \quad dY/Y = dA/A + aA^{1/a}(Y/P)^{-1/a}[-C + g((L^*-L)/L^*)p(Y/P-S)] \\ + (1-a)p(Y/P-S); \\ [Y/P \leq (Y/P)']$$

$$(14c) \quad dY/Y = dA/A + aA^{1/a}(Y/P)^{-(a-1)/a}[b - bX(P/Y)] \\ + aA^{1/a}(Y/P)^{-1/a}g((L^*-L)/L^*)(dP/P)^* + (1-a)(dP/P)^*; \\ [Y/P \geq (Y/P)'']$$

From equation (14), dY/Y can be drawn over the Y/P axis. If $L=L^*$ and $aA/A=0$, then within the range $(Y/P)' < Y/P < (Y/P)''$, dY/Y plotted against Y/P is negative at the lower bound, positive at the upper bound, and is a monotonically increasing function in between. The latter point is shown by differentiating (14a) with respect to Y/P and setting this equation equal to zero.

$$(15a) \quad \partial(dY/Y)/\partial(Y/P) = (a-1)bA^{1/a}(Y/P)^{-1/a} \\ + bXA^{1/a}(Y/P)^{-1/a}(P/Y) + (1-a)p; \\ (dA/A = 0, L = L^*)$$

$$(15b) \quad \partial(dY/Y)/\partial(Y/P) = 0 = Y/P - [X/(1-a)] \frac{bA^{1/a}\left(\frac{Y}{P}\right)^{-1/a}}{bA^{1/a}\left(\frac{Y}{P}\right)^{-1/a} - p}$$

The Y/P solution to 15b exceeds $X/(1-a)$ and $(Y/P)''$ exceeds X and so the dY/Y curve continuously increases in the range $(Y/P)' < Y/P < (Y/P)''$. In the range $Y/P > (Y/P)''$, Y/P reaches a maximum at $Y/P = X/(1-a)$, and approaches $(1-a)(dP/P)^*$ as Y/P approaches infinity (from equation 14c).

The dY/Y curve and the dP/P curve are shown plotted against the Y/P axis in Figure 3.

$$(16) \quad d(Y/P) = dY/Y - dP/P$$

Thus when the dY/Y curve lies above the dP/P curve, Y/P will rise, and conversely. Stability of an equilibrium value of Y/P (where $dY/Y = dP/P$) depends on the slopes of the curves at the intersection. If the slope of the dP/P curve exceeds the slope of the dY/Y curve the equilibrium is stable, otherwise unstable.

For any linear homogeneous function $[nV=f(nK, nP)]$ $Y/P=g(K/P)$,

$g' > 0$. This is shown by setting $n = 1/P$. Thus at an equilibrium level of Y/P , $dP/P = dK/K$ and the condition for stability can be written:

$$(17a) \quad \frac{d\left(\frac{dY}{Y}\right) / d\left(\frac{Y}{P}\right)}{d\left(\frac{dK}{K}\right) / d\left(\frac{Y}{P}\right)} > 1 \quad \text{or} \quad \left(\frac{K^2}{P^2}\right) \frac{P d^2 p - d p^2}{K d^2 K - d K^2} > 1$$

If $S = X[(dP/P) = (dK/K) = 0]$ at the equilibrium then the condition for stability can be written:

$$(17b) \quad K/P \cdot d^2 P / d^2 K > 1$$

If $L = L^*$ this condition can be written [from equations (3) and (5)]:

$$(17c) \quad \frac{K/P \cdot p/b > 1}{L \neq L^*}$$

If $L \neq L^*$ then for stability [from equations (3), (4), and (5)]

$$(17d) \quad K/P \cdot \frac{p}{b + g((L^* - L)/L^*)p} > 1$$

The basic analysis thus far has not been dependent on the use of the Cobb-Douglas function. Any linear homogeneous function gives rise to a similarly shaped curve in the neighborhood of S , and the stability conditions are general. However not every linear homogeneous function gives rise to a dY/Y curve that always dips down below the dP/P curve as Y/P becomes great. For example, the dY/Y curve derived from the linear homogeneous function:

$$(18) \quad Y = rK + wP,$$

and equations (3a) and 6 is:

$$(19) \quad \begin{aligned} dY/Y &= r[b - bX(P/Y)] + w(P/Y)(dP/P)^* \\ (Y/P > (Y/P)'', L &= L^*) \end{aligned}$$

This curve approaches rb as Y/P goes to infinity, and there is no reason why rb may not exceed $(dP/P)^*$.